



# iX4-280/380 LK-200/LK-300 Series

Peeler Quick Installation Guide

剝紙器快速安裝指南

剥纸器快速安装指南

Guía de instalación rápida del pelador

Guia de instalação rápida de descascador

Guide d'installation rapide de l'éplucheur

Schäler Schnellinstallationsanleitung

Guida all'installazione rapida della pelatrice

Soyma Makinesi Hızlı Kurulum Kılavuzu

Panduan Instalasi Cepat Pengupas

Skalare Snabbinstallationsguide

필러 빠른 설치 가이드

Snelle installatiehandleiding schiller

Skrócona instrukcja montażu odklejaka

Инструкция по установке отделителя этикеток



Revision Date : April 2024

## Note:

\*Specifications, accessories, parts and programs are subject to change without notice.

## Argox Information Co., Ltd.

8F., No. 28, Baogao Rd., Xindian Dist., New

Taipei City 231029, Taiwan (R.O.C.)

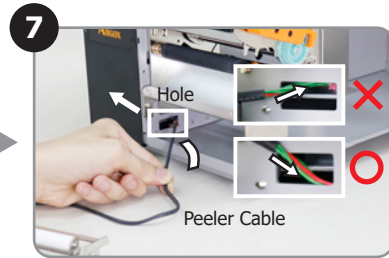
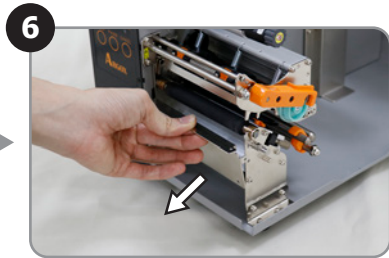
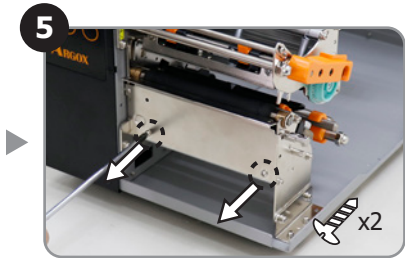
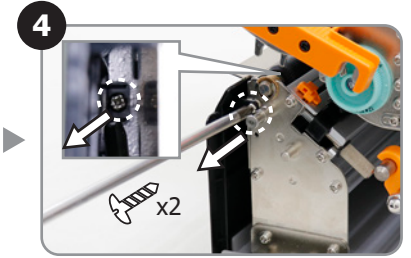
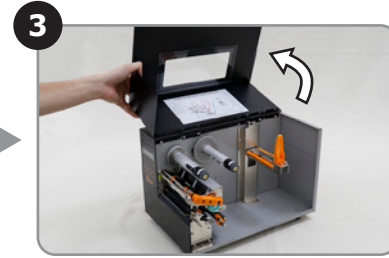
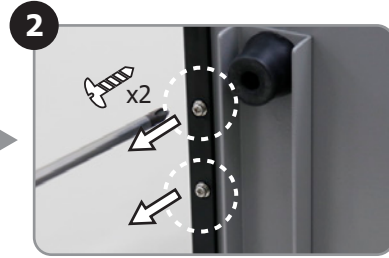
Tel: +886-2-8912-1121 Fax: +886-2-8912-1124

<https://www.argo.com>

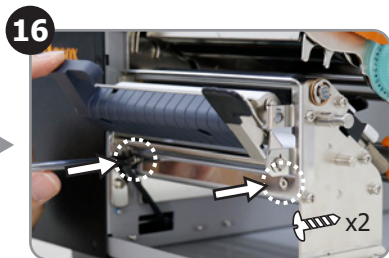
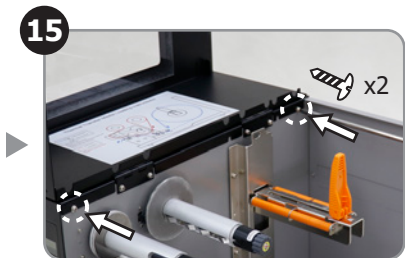
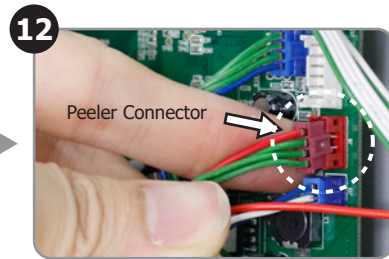
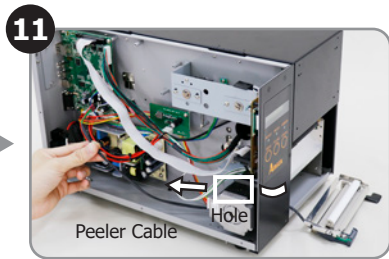
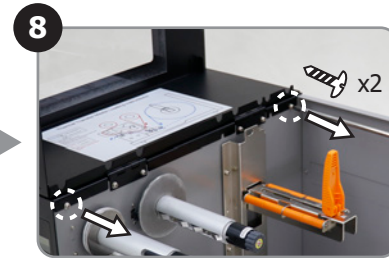
<https://www.youtube.com/user/argoxmkt>

Copyright © 2024. Argox Information Co., Ltd. All Rights Reserved.

START



※Cutter cable also goes through this hole



※Screw at the utmost left and right sides

